



WOODHAVEN PLUS

PLAN 5-2,257 SQUARE FEET

3 Bedrooms
3 Full Baths
1 Half Bath
2 Car Garage

- Multi Gen Unit Accessible from the Exterior or Interior of the Home
- Separate Living Quarters, Kitchenette & Bedroom with Bath
- Main House has the Same Features as the Woodhaven with Many Customizable Options

MULTI-GEN!



BREAKING THE MOLD OF TRADITIONAL HOME BUILDING



SILVERTON PLUS

PLAN 6-2,366 SQUARE FEET

2 Bedrooms + Den
2 Full Baths
1 Half Bath
3 Car Garage

- Multi Gen Unit Accessible from the Exterior or Interior of the Home
- Separate Living Quarters, Kitchenette & Bedroom with Bath
- Main House has a Large Living Room and Open Kitchen for Entertaining

MULTI-GEN!



VISIT DILORETOHOMES.COM TO CUSTOMIZE OUR PLANS!



TerReno offers many room options to customize your plan to fit your lifestyle!
VISIT DILORETOHOMES.COM TO CUSTOMIZE TODAY!



Di Loreto
Homes of Nevada
NV Contractor Lic.#45497

“THE DIFFERENCE
BETWEEN MEDIOCRITY
AND EXCELLENCE IS THE
ATTENTION TO DETAIL”

Di Loreto Homes are pledged to the letter and spirit of U.S. policy for the achievement of equal housing opportunity throughout the Nation. We encourage and support an affirmative advertising and marketing program in which there are no barriers to obtaining housing because of race, color, religion, sex, handicap, familial status, or national origin.





CREEKSIDE

PLAN 1-1,673^{SQUARE FEET}

3 Bedrooms
2 Full Baths
2 Car Garage (3 Car Optional)

- Nestled Dining Room off the Kitchen & Great Room are Perfect for Entertaining
- Kitchen Includes a Walk-in Pantry and Large Island
- Master Bedroom with a Beautiful Double Vanity and Large Walk-in Closet



PINEGROVE

PLAN 2-1,851^{SQUARE FEET}

3 Bedrooms
2 Full Baths
2 Car Garage (3 Car Optional)

- Spectacular Great Room & Open Kitchen with Large Bar Top Island
- Private Master Bedroom with Generous Walk-In Closet
- Grand Entry with a View Into the Backyard

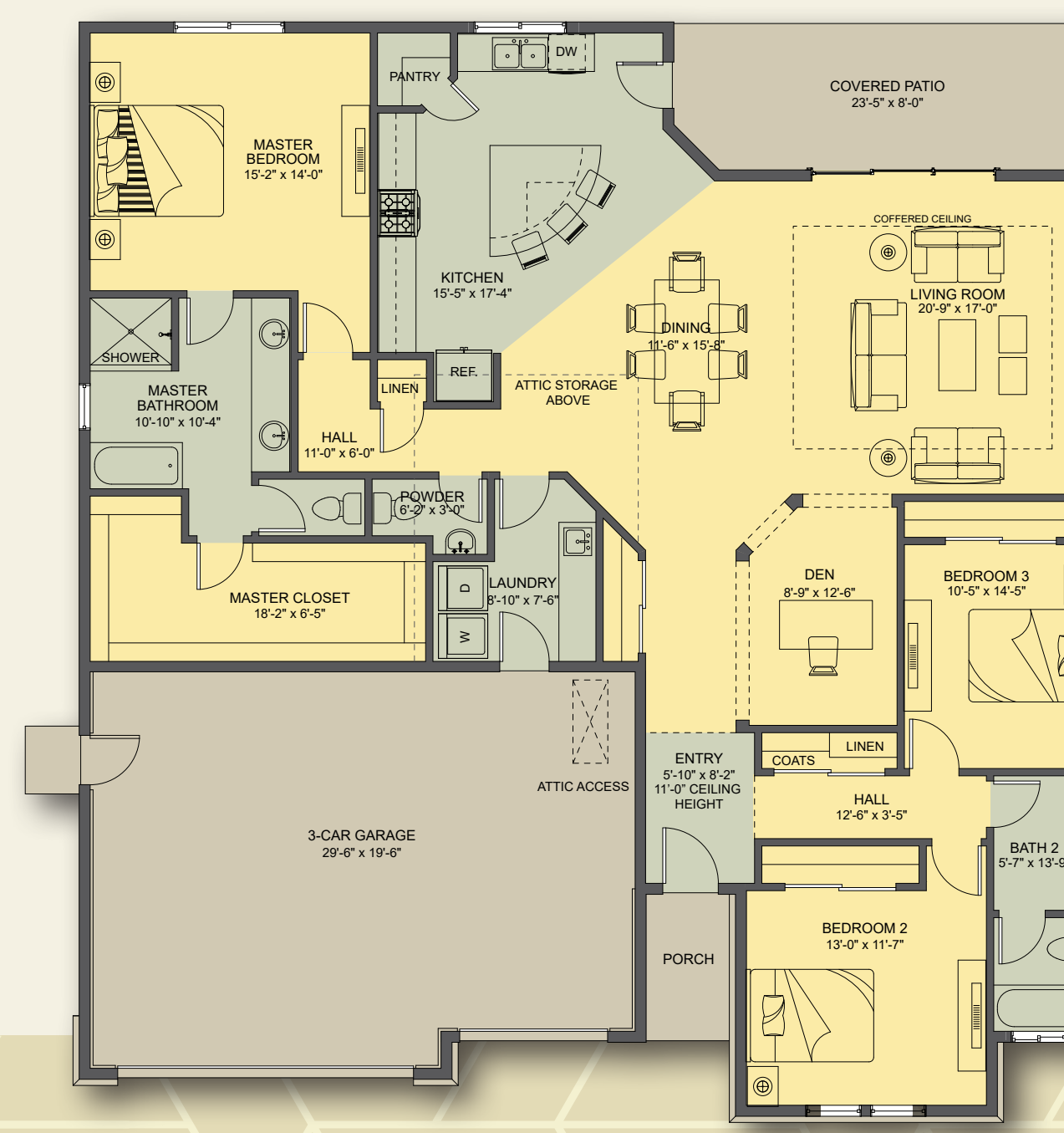


WOODHAVEN

PLAN 3-2,053^{SQUARE FEET}

3 Bedrooms + Den
2 Full Baths
1 Half Bath
2 Car Garage

- Stylish Kitchen with Ample Cabinet Space and Center Island
- Den Serves as Formal Living/Dining space or Home Office
- 2 Bedrooms with Shared Bathroom



SILVERTON

PLAN 4-2,278^{SQUARE FEET}

3 Bedrooms + Den
2 Full Baths
1 Half Bath
3 Car Garage

- Open Floor Plan with Spacious Kitchen & Island that is Ideal for Entertaining
- Grand Master Bedroom with Large Walk-in Closet
- Luxurious Master Bathroom
- Generous Amounts of Storage with Ample Laundry Room

TerReno offers many room options to customize your plan to fit your lifestyle!
VISIT DILORETOHOMES.COM TO CUSTOMIZE TODAY!

Please note these floor plans are for marketing purposes and are to be used as a guide only. All efforts have been made to ensure its accuracy at time of print. Changes may be made during the development process and dimensions, fixtures, fittings, finishes and specifications are subject to change without notice.